

ASTORIA[®]

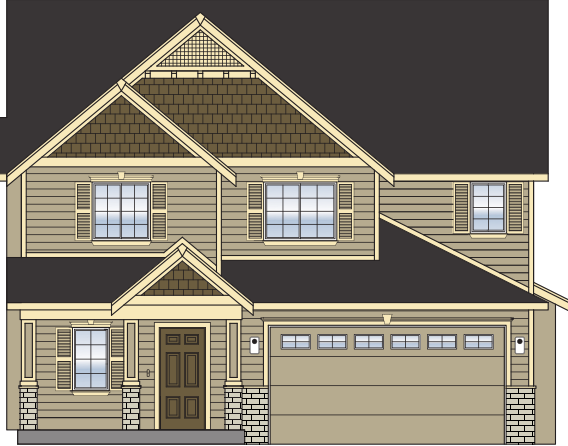


Photo Coming Soon

Sq Ft: 2,435
 Bedrooms: 4
 Bathrooms: 2.5
 Garage: 2 car

In a continuous effort to improve its products, Norris Homes reserves the right at its sole discretion to make changes to maps, plans, specifications, materials, features and colors without notice. All marketing materials are examples, are not to scale and not deemed a warranty of any kind. Square footages are approximate. Specifications may vary amongst home collections and models. Prices and availability subject to change without notice. As of 9/29/2008.



MAIN FLOOR



UPPER FLOOR

FEATURE HIGHLIGHTS

- Large base molding and crown molding
- Exposed aggregate patio, deck if grade does not allow patio
- 30 year architectural composition roofing
- Recessed Panel Cabinets
- Phone and cable wiring throughout home
- Wood wrapped windows
- Shadow box with wainscot
- Rounded corners throughout
- Recessed can lighting in many rooms
- Complementing hardwood floors
- All interior doors painted 6 panel masonite with glass in kitchen pantry door which is stained
- Pre-plumbed for central vacuum system
- Pre-wired for security system and garage door opener(s)

Where Dreams Are Built



www.norrishomesinc.com