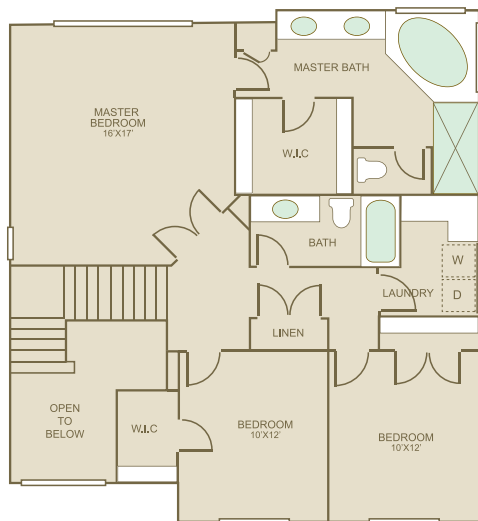


BUSSOLI®

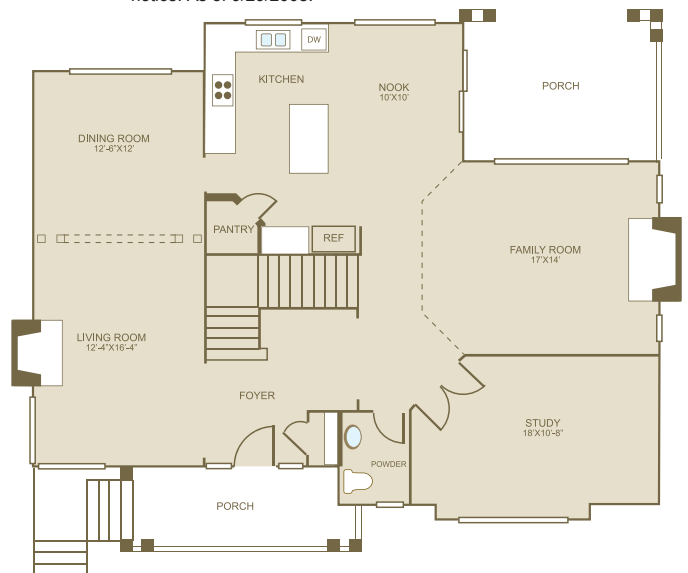


Sq Ft: 3,250
Bedrooms: 4
Bathrooms: 3.5
Garage: 4 car

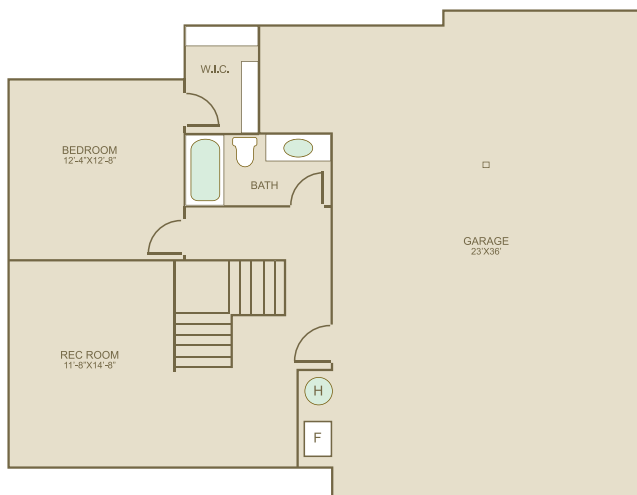
In a continuous effort to improve its products, Norris Homes reserves the right at its sole discretion to make changes to maps, plans, specifications, materials, features and colors without notice. All marketing materials are examples, are not to scale and not deemed a warranty of any kind. Square footages are approximate. Specifications may vary amongst home collections and models. Prices and availability subject to change without notice. As of 9/29/2008.



UPPER FLOOR



MAIN FLOOR



LOWER FLOOR

FEATURE HIGHLIGHTS

- Large base molding and crown molding in all formal areas
- Shadow box with wainscot
- Rounded corners corners throughout
- Complementing hardwood floors
- Raised arch panel cabinets
- All interior doors painted 6 panel masonite with glass in pantry door in kitchen

NORRIS
 HOMES
www.NorrisHomesInc.com