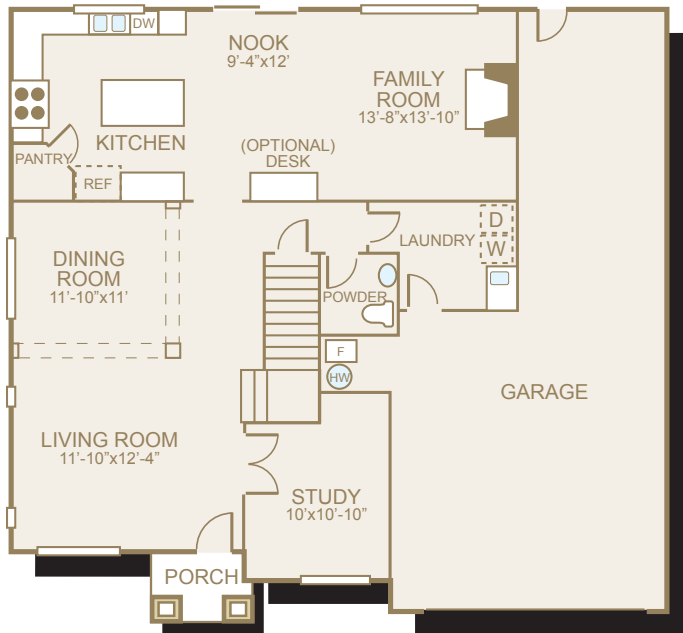


# NANTUCKET®

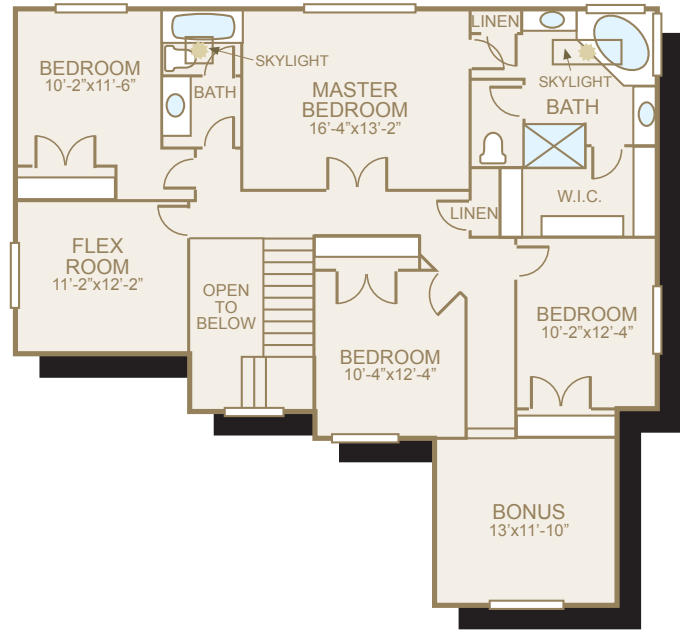


**Sq Ft: 2,810**  
**Bedrooms: 4**  
**Bathrooms: 2.5**  
**Garage: 3 car**

In a continuous effort to improve its products, Norris Homes reserves the right at its sole discretion to make changes to maps, plans, specifications, materials, features and colors without notice. All marketing materials are examples, are not to scale and not deemed a warranty of any kind. Square footages are approximate. Specifications may vary amongst home collections and models. Prices and availability subject to change without notice. As of 9/29/2008.



**MAIN FLOOR**



**UPPER FLOOR**

## FEATURE HIGHLIGHTS

- Large base molding and crown molding in all formal areas
- Exposed aggregate patio, deck if grade does not allow patio
- 30 year architectural composition roofing
- Complementary hardwood floors
- Wood wrapped windows
- Shadow box with wainscot
- Rounded corners throughout
- Recessed can lighting in many rooms
- 7 phone and 7 cable jacks
- All interior doors painted 6 panel masonite with glass in pantry door in kitchen
- Raised arch panel cabinets
- Pre-plumbed for central vacuum system
- Pre-wired for security system and garage door opener(s)

Where Dreams Are Built



[norrishomesinc.com](http://norrishomesinc.com)