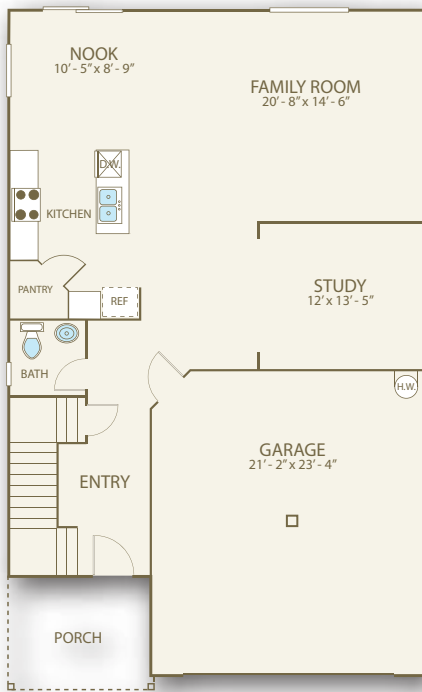


# RANDOLPH<sup>®</sup>

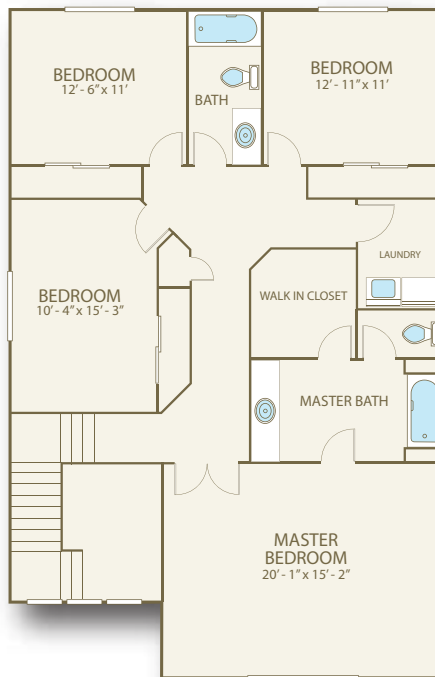


**Sq Ft: 2,445**  
**Bedrooms: 4**  
**Bathrooms: 2.5**  
**Garage: 2 car**

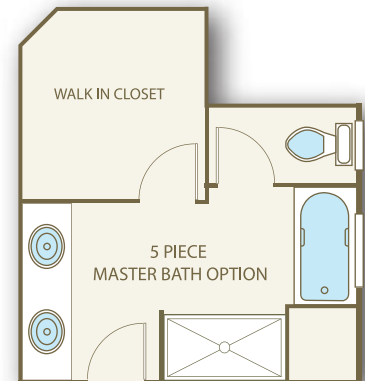
In a continuous effort to improve its products, Norris Homes reserves the right at its sole discretion to make changes to maps, plans, specifications, materials, features and colors without notice. All marketing materials are examples, are not to scale and not deemed a warranty of any kind. Square footages are approximate. Specifications may vary amongst home collections and models. Prices and availability subject to change without notice. As of 9/29/2008.



**MAIN FLOOR**



**UPPER FLOOR**



## FEATURE HIGHLIGHTS

- 30 year architectural composition roofing
- Classic hand painted millwork
- Dual-pane, insulated JELD-WEN windows
- Large master suites with over sized walk-in closet
- Handsome architectural details with traditional Craftsman influence
- Kenmore black appliances
- 30" tall upper recessed panel cabinets
- Decorative shingles or board and batten accents
- Traditional designer-selected lighting fixtures

Where Dreams Are Built



[www.norrishomesinc.com](http://www.norrishomesinc.com)